

EARTH FIRES

The Soul of Outdoor Fires



At Earth Fires we put the soul into the outdoor wood-fire, whether that's our clever Vortex firepits, our simply exquisite Bushman barbeques or our rather tasty Milano pizza ovens.

We want to connect people and make the most of the great outdoors. It might be staying out late into the evening with the gentle crackle and blazing heat of your Vortex firepit and sound of conversations drifting merrily through the warm air. Or maybe you go nuts for good food, then the Bushman barbeques provide the perfect hosting opportunity for a group of friends. The Milano pizza ovens offer a completely different opportunity where all your guests get involved to make those mouth-watering, wood-fired, fresh dough pizzas. Are you already starting to smell, feel and taste your Earth Fire?



CONTENTS

The Environment

Corten Steel

Products

The Vortex Range

The Vortex & Vortex Cub

The Vortex Cub Table

The Bushman Range

The Bushman

The Little Bushman

The Milano Pizza Oven

The Milano Grande Pizza Oven

BEING KIND TO THE ENVIRONMENT

At Earth Fires we care about our environment and we know you do too.

- » All our outdoor fires use wood as a sustainable and low-carbon fuel. Did you know that each tree absorbs the same amount of carbon dioxide when growing as it releases when burned¹? That's why we use wood rather than fossil fuels such as natural gas. If you source your wood locally from sustainable woodlands your appliance can be close to carbon-neutral.
- » The clever secondary airwash design in our Vortex firepits reduces the particulate matter when burning helping to ensure cleaner air than a traditional firepit.

¹ <https://woodsurre.co.uk/the-case-for-woodfuel/>

How to use my Earth Fire best?

Only use kiln dried or well seasoned wood. Look out for Woodsure's 'Ready to Burn' logo to easily identify firewood that has a moisture content of 20% or less. This not only produces more heat than wet wood but also reduces air particulate matter.

When using the Earth Fires Vortex firepits make sure you keep the level of the fuel below the secondary airwash hole.



WHY CORTEN STEEL

Corten Steel is pretty clever so we're going to get a bit geeky here.

Corten Steel oxidises to form a protective layer on its surface under the influence of the weather. Unlike other steels this corrosion-retarding layer protects the steel from degradation. Even stainless steel will tarnish with the heat and lose its shiny new look. So you can rest assured that not only will your firepit or BBQ be safe to leave outside, but that it will look even better over time!

TRADITIONAL STEEL VS CORTEN STEEL

And of course the other reason to use Corten Steel is because it looks amazing! Your Earth Fires firepit or BBQ will be the centerpiece to your garden.

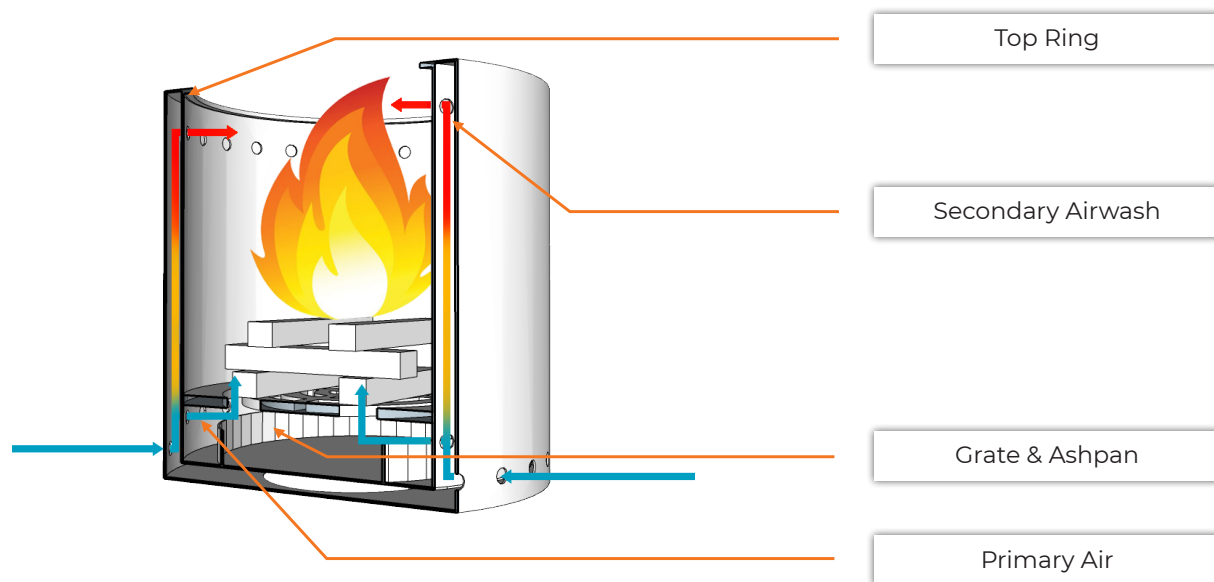
- ✓ Weatherproof
- ✓ Looks amazing



THE VORTEX FIREPIT

The revolutionary design of the Vortex firepit eliminates almost all smoke. A traditional firepit will produce significant quantities of smoke so that users need to move upwind during use and change their clothes after use. The clever secondary airwash of the Vortex firepit takes air from the bottom of the firepit, heats it and then injects it into the top of the combustion chamber. This injection of oxygen allows the flame to burn much hotter and cleaner allowing you to say goodbye to smoke!

- ✓ **Very low smoke**
- ✓ **Weatherproof**
- ✓ **Stunning Corten Steel**
- ✓ **Environmentally friendly**



Features of the Vortex firepit

Primary air. The primary air is particularly useful during the initial ignition process, helping you to light the fire quickly.

Secondary airwash. This is a key feature of your Vortex fire that injects air into the top of the firepit, allowing the fire to burn cleaner and hotter. This dramatically reduces smoke which is great for you and for the environment.

Grate and Ashpan. Your grate will aid good combustion in the firepit as well as prolonging its lifespan. The ashpan makes cleaning the firepit simple.

Top Ring. This works with the secondary airwash to guide the flames into the centre of the firepit, allowing the fire to burn hotter and cleaner.

Corten Steel. Vortex firepits are made from Corten Steel which oxidises to form a protective layer on the surface. Other steel will corrode in damp conditions, but the unique properties of Corten Steel protect it from corrosion and your firepit will actually look better over time. You will notice the Weathering steel change colour as it seasons and during use; this is a property of the steel.

A Vortex or a chimenea?

Round firepits provide heat to a 360 degree angle, chimeneas provide heat to less than 180 degrees, meaning more than twice the number of people feel the heat!



THE VORTEX **CUB** FIREPIT

The Vortex Cub is our **350mm** firepit suitable for to 6 people.

Size: 350mm external diameter | 350mm high

Logs: up to 225mm

Grate, ashpan, stand and glove included



THE VORTEX **FIREPIT**

The Vortex is our **600mm** firepit suitable for up to 10 people.

Size: 600mm external diameter | 400mm high

Logs: up to 460mm

Grate, ashpan, stand and glove included

THE VORTEX CUB TABLE

The Vortex Cub Table creates a stunning focal point in your garden and makes your firepit more versatile. Keep the lid on to use as a coffee table during the day and in the evening simply remove the lid to light the firepit.

Diameter: 700mm



THE BUSHMAN **BARBEQUE RANGE**

The Bushman Barbeque Range offers the ultimate wood-fired cooking experience. There are no limits to the recipes you can create with meat, fish or vegetable combinations for the everyday cook or the creative professional. The Bushman is at the heart of the cooking experience, bringing people together around fire and food. Of course you don't have to be the host to do the cooking, with the round cooking plate lending itself to the definitive social meal.

Why cook over wood?

Simply put, flavour. Allow the wood aromas to flavour your food as you connect with your guests.

- ✓ **Mouthwatering flavours**
- ✓ **Versatile outdoor cooking**
- ✓ **Connecting people**



THE BUSHMAN BARBEQUE

The Bushman is the ultimate wood-fired cooking experience. The huge 1000mm cooking plate is suitable for large parties and the all-in-one unit provides a storage area for wood and a food preparation table. The stainless steel cook plate is 10mm thick.

Cooking Plate: 1000mm

Table size: 1330mm x 500mm x 700mm



The Bushman comes complete with cooking plate, cooking grate, glove, ashpan and lifting tool.

See Earth Fires Accessories page for optional extras.



THE LITTLE BUSHMAN BARBEQUE

The Little Bushman is the cheeky little brother to The Bushman, but still boasts an impressive 600mm cooking plate suitable for medium sized parties. The stainless steel cook plate is 10mm thick.

Cooking Plate: 600mm

Height: 900mm

The Little Bushman comes complete with cooking plate, cooking grate, glove, ashpan and lifting tool.

See [Earth Fires Accessories](#) page for optional extras.





THE MILANO PIZZA OVENS

Already smelling the freshly cooked dough? You won't have to wait long as the pizzas are cooked in 90-120 seconds. So invite everyone round and prepare your food and wood-fired pizza oven!

It is designed specifically for making pizzas, however, a variety of meals can also be cooked depending on the temperature of the oven.

Made from fireclay

Our pizza ovens are made from fireclay bricks in both the hearth and the dome. The fireclay bricks are essential as they can withstand the very high temperatures required for cooking pizza and also retain this heat without letting it dissipate. A sign of a good quality fireclay brick is that it will keep the oven hot for over 6 hours. The ideal temperature for a pizza is 370°C far exceeding the temperature of a conventional oven.

Pre-fabricated

Our pizza ovens come pre-fabricated. For occasional users you will only need to prepare your base. For frequent users we recommend adding a fire blanket and layer of fireclay/fondu mix for better insulation and to prolong the life of the oven. See instruction manual for details.

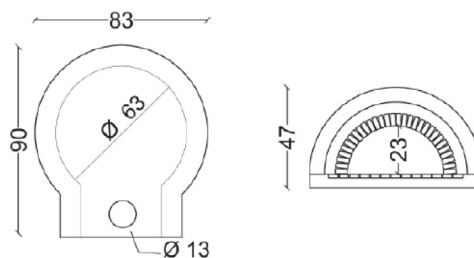
Your pizza oven should be covered to protect it from the weather. Ideally we recommend placing under a pergola, but a waterproof cover is also available. See fitting instructions for full details.

You can make the base for you pizza oven with blocks, bricks or stone in keeping with your garden. This is not included with the oven.



THE MILANO 830MM

The Milano is the smaller of the two ovens ideal for most domestic settings, entertaining smaller parties or those with limited garden space.

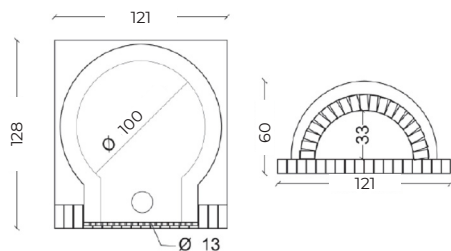


Fits: 1-2 pizzas

Total Weight: 180kg (2 pieces)

THE MILANO GRANDE 1210MM

The Milano Grande has a larger oven capacity and is suitable for large garden parties or commercial use.



Fits: 4-5 pizzas

Total Weight: 520kg (3 pieces)





EARTH FIRES ACCESSORIES



Pizza Oven Door
(included with oven)



Brass Oven Brush



Pizza Peel
12 x 12" blade 35" long overall



Door Thermometer



Flue pipe & rain cap
(available with and without a damper)



Pizza Oven Cover
(included with oven)



Bushman Castor Set



Bushman Cover



Little Bushman Cover

Authorised dealer stamp:

EARTH  FIRES